



GTE Communications Corporation
Birmingham, Al.

Gensler

Architect
101 Marietta Street, NW
Suite 3000
Atlanta, Georgia 30303
404.507.1000

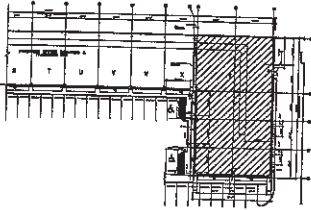
GTE Communications Corp.

GTE
GTE Communications Corporation

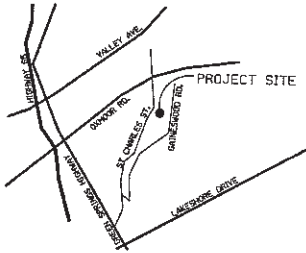
400 Meadow Lake Dr., Suite Y
Birmingham, AL.

Gensler

KEY PLAN



LOCATION MAP



PROJECT INFORMATION

BUILDING ADDRESS: 400 Meadow Lake Dr., Suite Y, Birmingham, AL 35209
OCCUPANCY TYPE: Business
CONSTRUCTION TYPE: N.A.
BUILDING AREA: 17940
TOTAL PROJECT AREA: 6533
PROJECT DATUM ELEVATION: N.A.
FIREPROOFING: N.A.
APPLICABLE CODES: N.A.

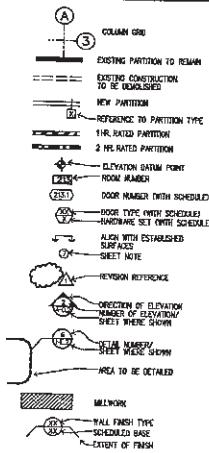
GRAPHIC SYMBOLS (CONT.)

- POWER & TELEPHONE**
- ◊ WALL MOUNTED DUPLEX, FLUSH
 - ◊ WALL MOUNTED FOURPLEX
 - ◊ WALL MOUNTED DEDICATED DUPLEX
 - ◊ WALL MOUNTED SEPARATE DUPLEX
 - ◊ WALL MOUNTED DEDICATED FOURPLEX
 - ◊ WALL MOUNTED FOURPLEX - HALF DEDICATED
 - ◊ WALL MOUNTED SPECIAL OUTLET
 - ◊ WALL MOUNTED TELEPHONE RECEPTACLE
 - ◊ WALL MOUNTED TELEDATA RECEPTACLE
 - ◊ WALL MOUNTED DATA RECEPTACLE
 - ◊ FLOOR MOUNTED TELEPHONE RECEPTACLE, FLUSH
 - ◊ FLOOR MOUNTED TELEDATA RECEPTACLE, FLUSH
 - ◊ FLOOR MOUNTED DATA RECEPTACLE, FLUSH
 - ◊ FLOOR MOUNTED DUPLEX, FLUSH
 - ◊ FLOOR MOUNTED FOURPLEX, FLUSH
 - ◊ FLOOR MOUNTED DEDICATED DUPLEX, FLUSH
 - ◊ FLOOR MOUNTED DEDICATED FOURPLEX, FLUSH
 - ◊ FLOOR MOUNTED SEPARATE DUPLEX, FLUSH
 - ◊ FLOOR MOUNTED SEPARATE FOURPLEX, FLUSH
 - ◊ POKE-THRU TEL. MOUNTMENT
 - ◊ POKE-THRU TELEDATA MOUNTMENT
 - ◊ POKE-THRU DATA POWER MOUNTMENT
 - ◊ POKE-THRU DUPLEX POWER MOUNTMENT
 - ◊ POKE-THRU FOURPLEX POWER MOUNTMENT
 - ◊ POKE-THRU DUPLEX POWER MOUNTMENT - DEDICATED
 - ◊ POKE-THRU FOURPLEX POWER MOUNTMENT - SEPARATE
 - ◊ POKE-THRU DUPLEX POWER MOUNTMENT - SEPARATE
 - ◊ POKE-THRU FOURPLEX POWER MOUNTMENT - SEPARATE
 - ◊ FLUSH WALL MOUNTED POWER JUNCTION BOX WITH AIRWIRE CONNECTION
 - ◊ FLOOR POKE-THRU JUNCTION BOX WITH AIRWIRE CONNECTION
 - ◊ COMBINATION WALL MOUNTED JUNCTION BOX WITH AIRWIRE CONNECTION TO FURNITURE SYSTEM
 - ◊ COMBINATION FLOOR POKE-THRU JUNCTION BOX WITH AIRWIRE CONNECTION TO FURNITURE SYSTEM
 - ◊ CORD READER
 - ◊ INTERCOM DEVICE
 - ◊ DOOR RELEASE BUTTON
 - ◊ DOOR BELL PUSH BUTTON
 - ◊ DOOR BELL
 - ◊ ELECTROMAGNETIC DOOR HOLD OPEN
 - ◊ EQUIPMENT ITEM - SEE SCHEDULE
 - ◊ FIRE HOSE CABINET
 - ◊ FIRE EXTINGUISHER CABINET
 - ◊ FIRE WARDEN STATION
 - ◊ FIRE ALARM PULL BOX

REFLECTED CEILING (CONTINUED)

- ◊ EXHAUST FAN
- ◊ SMOKE DETECTOR
- ◊ SPEAKER
- ◊ MOTION DETECTOR
- ◊ ACCESS DOOR
- ◊ SECURITY CAMERA
- ◊ THERMISTAT
- ◊ LIGHT SWITCH
- ◊ DIMMER SWITCH
- ◊ PROJECTION SCREEN
- ◊ RETURN AIR
- ◊ SUPPLY AIR
- E DENOTES EXISTING TO REMAIN
- N DENOTES NEW
- R DENOTES EXISTING TO BE RELOCATED

GRAPHIC SYMBOLS



REFLECTED CEILING

- ◊ ACoustical CEILING AND GRID
- ◊ SHIM RUNNER
- ◊ 2x4 FLUORESCENT LIGHT FEATURE
- ◊ NIGHT LIGHT/2x4 HOLLOW GRID
- ◊ EXISTING TO BE REMOVED
- ◊ EXISTING TO REMAIN
- ◊ EXISTING TO BE RELOCATED
- ◊ UNDER CABINET FLUORESCENT FEATURE
- ◊ NEW FLUORESCENT STRIP FEATURE
- ◊ CEILING HEIGHT CHANGE
- ◊ DIMENSION OF CEILING ABOVE FINISH FLOOR

- ◊ COLOR MOUNTED EXIT SIGN, SHOWS DIRECTION OF EGRESS AND DIRECTION OF APPROXIMATE
- ◊ RECESSED FLUORESCENT DOWNLIGHT
- ◊ RECESSED FLUORESCENT WALL WASHER
- ◊ TRACK LIGHTING
- ◊ SURFACE MOUNTED LIGHT FEATURE
- ◊ WALL SCOPE

DRAWING INDEX (CONT.)

MECHANICAL (DESIGN/BUILD)

ELECTRICAL (DESIGN/BUILD)

FIRE PROTECTION (DESIGN/BUILD)

PLUMBING (DESIGN/BUILD)

GRAPHICS (OWNER PROVIDED)

DRAWING INDEX

CIVIL

LANDSCAPING

ARCHITECTURAL

- AD.0 SHEET LEGENDS, ABBREVIATIONS, SYMBOLS, ETC.
- AD.1 GENERAL NOTES / ABBREVIATIONS
- AD.2 TYPICAL INFORMATION SHEET
- AD.3 CONSTRUCTION PLAN
- AD.4 POWER & COMMUNICATION PLAN
- AD.5 REFLECTED CEILING PLAN
- AD.6 FINISH PLAN
- AD.7 INTERIOR ELEVATIONS
- AD.8 INTERIOR PARTITIONS / DETAILS
- AD.9 DETAILS

PROJECT TEAM

LOCAL CONTACT

GTE
4855 N. UNIVERSITY BLVD.
ATLANTA, GA 30328
ATTN: JIM JONES
MIL. CODE: 6850
PHONE: 404.462.2222
FAX: 404.462.3555

ARCHITECT

GENSLE
90 MARQUETTA ST., 4TH FL.
SUITE 3000
ATLANTA, GA 30303
ATTN: JIM HOOVER
PHONE: 404.527.0801
FAX: 404.527.0501

Issue #	Date	By	Check
1	11.18.99	ISSUE FOR PROVISION	B.G.H. JH
2	12.13.99	ISSUED FOR CONSTRUCTION	AGE JH

Project Name:	GTE Communications Corporation
Project Address:	400 Meadow Lake Dr., Birmingham, Alabama
Project Number:	11-000102
Designer:	GENSLER ARCHITECTS
Computer File:	gty_001.rvt
Scale:	NONE

All drawings and written material appearing herein constitute original and unpublished work of the architect and may not be duplicated, copied, or disclosed without written consent of the architect.
© 2000 Gensler All Rights Reserved

HARDWARE SPECIFICATIONS

LEVER LOCKSET: SOLAGE LOCK CO. V.L. SERIES
 STYLE: MDTIME
 FINISH: 826; SATIN CHROMIUM PLATED

LEVER LOCKSET: SOLAGE LOCK CO. V.L. SERIES
 STYLE: MDTIME
 FINISH: 826; SATIN CHROMIUM PLATED

* SEE HARDWARE TYPES NOTE # 3.

DUMMY LEVER: BUILDING STANDARD

ELECTRIC LOCK (LEVER): BUILDING STANDARD

ELECTRIC HINGE: BUILDING STANDARD

BUTT HINGES: BUILDING STANDARD

SILENCERS: BUILDING STANDARD

FLOOR DOOR STOP: BUILDING STANDARD

CONCEALED OVERHEAD CLOSER: NOT USED

COAT ROOF: BUILDING STANDARD, MATCH HARDWARE FINISH

HARDWARE TYPES

SET #1
 LEVER LOCKSET (SEE HARDWARE SPECIFICATIONS)
 BUTT HINGES
 FLOOR DOOR STOP

SET #2
 LEVER LOCKSET (SEE HARDWARE SPECIFICATIONS)
 BUTT HINGES
 CONCEALED OVERHEAD CLOSER
 FLOOR DOOR STOP

SET #3
 LEVER LOCKSET
 BUTT HINGES
 FLOOR DOOR STOP
 CONCEALED OVERHEAD CLOSER

SET #4
 LEVER LOCKSET
 BUTT HINGES
 FLOOR DOOR STOP
 CONCEALED OVERHEAD CLOSER

SET #5
 CONCEALED DOOR
 HINGE
 CONCEALED OVERHEAD CLOSER
 STEWART AT HEAD END

SET #6 (SECURITY DOOR)
 ELECTRIC LOCK
 ELECTRIC HINGE
 BUTT HINGES
 CONCEALED OVERHEAD CLOSER

SET #7 (DOOR)
 DOOR PULL (WITH STICK)
 CONCEALED OVERHEAD CLOSER
 CONCEALED OVERHEAD CLOSER
 CONCEALED OVERHEAD CLOSER
 CONCEALED OVERHEAD CLOSER
 CONCEALED OVERHEAD CLOSER
 CONCEALED OVERHEAD CLOSER

SET #8 (ENTRY DOOR)
 BLDG. STANDARD DOOR PULL
 CONCEALED OVERHEAD CLOSER
 CONCEALED OVERHEAD CLOSER
 DOOR LOCK

SET #9 (CONFERENCE ROOM)
 SAME AS SET # 3 EXCEPT FOR
 CONCEALED OVERHEAD CLOSER

SET #10 (TELEPHONE CLOSET)
 SAME AS SET # 3 EXCEPT FOR
 CONCEALED OVERHEAD CLOSER

SET #11 (ELECTRICAL)
 BUTT HINGES
 CONCEALED OVERHEAD CLOSER
 MAGNETIC CATCH

- NOTES:
- ALL ELECTRIC HARDWARE SHALL BE TIED INTO BUILDING LIFE SAFETY SYSTEM. ALL CONCEALED DOOR HARDWARE SHALL BE FAIL-SAFE AND ALL NON-EMERGENCY DOORS SHALL BE FAIL-SECURE, I.N.D..
 - ALL HARDWARE SHALL BE BUILDING STANDARD FINISH, U.O.N.
 - ALL LOCKSETS AND EXIT DEVICES TO BE FURNISHED WITH "BEST" 7 PIN LOCK SYSTEM AND "BEST" # 1234 CYLINDERS (COLLAPSE IN IF CONSTRUCTION CODES).
 - RETROFIT EXISTING EMERGENCY DOORS WITH OTE ACCEPTABLE LOCKSETS (SEE NOTE # 3 ABOVE) AND EXIT DEVICES. CONFIRM WITH OTE AND ARCHITECT PRIOR TO ORDERING.

DOOR TYPES

TYPE	SIZE	DESC.	RATING	REF. DWG.
A	3'-0" FULL HT	WOOD	NONE	
A1	3'-0" FULL HT	WOOD	C-LABEL	
B	3'-0" x BUILDING STANDARD	GLASS	NONE	
B	3'-0" x BUILDING STANDARD	GLASS	NONE	
C	3'-0" FULL HT	PTD	NONE	
D	10'-0" x BLDG. STD. HT.	PTD	NONE	
E	7'-0" FULL HT	BLND	NONE	
E	7'-0" FULL HT	GLASS	NONE	
F	3'-0" x BLDG. STD. HT.	PTD	NONE	
F	3'-0" x BLDG. STD. HT.	PTD	NONE	
G	3'-0" FULL HT & SIDELIGHT	GLASS	NONE	
G	3'-0" FULL HT & SIDELIGHT	GLASS	NONE	
H	3'-0" FULL HT	BLND	NONE	
H	3'-0" FULL HT	GLASS	NONE	

FINISH SCHEDULE

BLUE SCHEME

WALLCOVERING

W.C.-01 CARBONITE: XONE 6415 MEXUS, COLOR: W/ 601 PAINT

P.-01 BENJAMIN MOORE COLOR: NAVADO WHITE, EGGSHELL FINISH (WALLS).

P.-02 BENJAMIN MOORE COLOR: NAVADO WHITE, SEASHELL FINISH (DOOR FRAMES).

P.-03 BENJAMIN MOORE COLOR: 1678 BASE 4, EGGSHELL FINISH (WALLS).

P.-04 BENJAMIN MOORE COLOR: 296 BASE 3, EGGSHELL FINISH (WALLS).

P.-05 BENJAMIN MOORE COLOR: 800 BASE 1, EGGSHELL FINISH (WALLS).

WALL BASE

B.-01 JONASONITE, 4" STRAIGHT, RUBBER WALL BASE, COLOR: 40 BLACK

B.-02 JONASONITE, 4" COVE RUBBER WALL BASE, COLOR: 40 BLACK

CARPET

C.-01 INTERFACE, STYLE: SAFARI, 2010 RIVER

C.-02 INTERFACE, STYLE: PANTHER, COLOR: 2065 MARBLE

* FOR OTE NATIONAL ACCOUNT CARPET PRICING CONTACT: * KEVIN PARKS
 ACCOUNT EXECUTIVE
 INTERFAC
 770-595-8888
 770-595-8681 FAX

RESILIENT FLOORING

V.-01 ARMSTRONG GEOMETEX, SIZE: 12" x 12", COLOR: 5153 LIMESTONE BEIGE

V.-02 ARMSTRONG GEOMETEX, SIZE: 12" x 12", COLOR: 5213 MINERAL DUST

V.-03 ARMSTRONG EXCELON S01, SIZE: 12" x 12", COLOR: 5191 ARBOR GRAY PLASTIC LAHAGATE

PL.-01 NEVAMAR AMP PLUS, COLOR: 2 DREAMY ALLUSION TEXTURED, NUMBER: AL-50-T

PL.-02 NEVAMAR AMP PLUS, COLOR: 1 CINDER GRAY MATTE TEXTURED, NUMBER: MG-5-ST

MILLWORK SCHEDULE

NO.	DESCRIPTION	FINISH	REF. DRAWING
MM-01	BASE CABINETS BY ADJUSTABLE SHELVING ABOVE	PL-01	1, 2, 4, 5, 7, 8, 11
MM-02	BASE CABINETS BY SHK AND UPPER CABINETS (CONCRESSION)	PL-01	1, 2, 4, 5, 7, 8, 11
MM-03	NOT USED		
MM-04	NOT USED		
MM-05	NOT USED		
MM-06	RESTROOM VANITY COUNTER	PL-01	11/28-1
MM-07	30" DEEP WOOD COUNTER BY SHELF ABOVE	PL-02	12/28-1

EQUIPMENT SCHEDULE

- ◇ PRINTER (BY TENANT)
- ◇ COPIER (BY TENANT)
- ◇ FAX MACHINE (BY TENANT)
- ◇ REFRIGERATOR (BY C.C.): GE "J" SERIES
 MODEL: TR18312
 COLOR: WHITE OR WHITE
- ◇ MICROWAVE (BY C.C.): GE SPACEMASTER II
 MODEL: E1120PT WITH LINER COUNTER MOUNTING
 COLOR: WHITE OR WHITE
- ◇ UPS (BY TENANT)
- ◇ CISCO
- ◇ CISCO CATALYST 1824 (2 DEDICATED CIRCUITS), (BY TENANT)
- ◇ DIGITAL LINE Vx ENGINE T1 CIRCUITS, (BY TENANT)
- ◇ SRETEL (VOICE) DATA CONNECT TO UPS, (BY TENANT)
- ◇ EMPLOYEES (BY TENANT)



GTE Communications Corporation

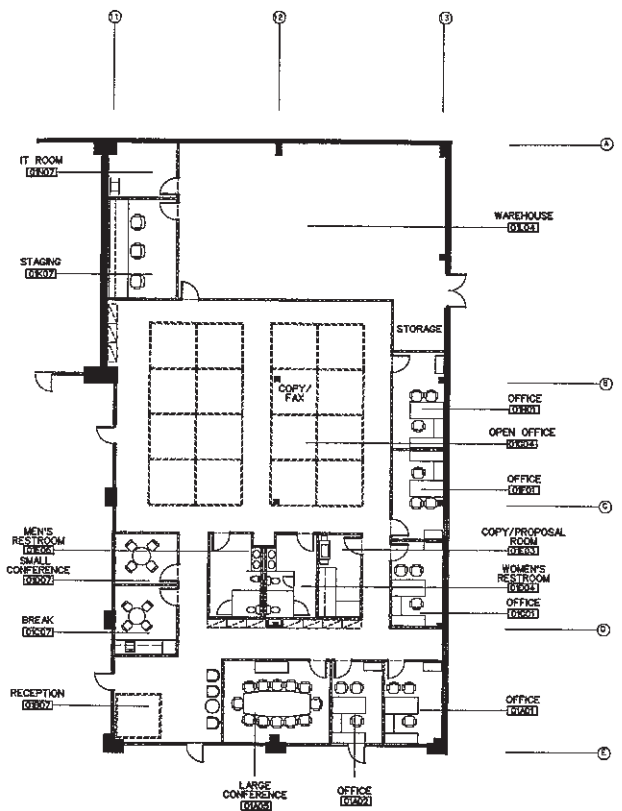
Gensler

375 Madison Avenue, NYC
 New York, NY 10017
 Tel. 212-512-2000
 Fax: 212-512-2000

Item	Date	Issue	To	Drawn
1	11.19.99	ISSUE FOR PRICING	BLK	JH
2	12.02.99	REVISED FOR CONSTRUCTION	ACTV	JH

Project Name: GTE Communications Corporation
 Project Number: Birmingham, Alabama
 Description: 13,000,000
 Consultant File: 39713,0001,0231 final work schedule 09.02.99
 Status: NONE

All drawings and when issued according to these conditions and specifications, shall be the property of Gensler and shall not be reproduced, used or distributed without written consent of the architect.
 © 1999 Gensler All Rights Reserved



KEYNOTES

(Blank area reserved for keynotes)



GTE Communications Corporation

Gensler

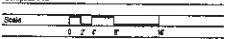
100 Madison Avenue, NY, NY
 10022-3000
 Phone: 212.904.3000
 Fax: 212.904.3000

GENERAL NOTES

- A. REMOVE ALL EXISTING CARPET AND ACT FLOORING. CLEAN
- B. OUTLETS WHICH ARE TO BE DISCONNECTED SHALL BE DISCONNECTED BACK TO PANEL.
- C. REMOVE EXISTING RESILIENT FLOOR, PARQUET, ETC.
- D. WHERE WALLS ARE DAMAGED DUE TO DESTRUCTION OF FINISH, PATCH AND REPAIR TO MATCH EXISTING. REPAIR AS NEEDED TO RECEIVE SCHEDULED FINISHES.

Rev.	Date	Issue	By	Check
1	11-18-98	ISSUE FOR PRICING	BUT	JL
2	12-16-98	ISSUED FOR CONSTRUCTION	HW	JL

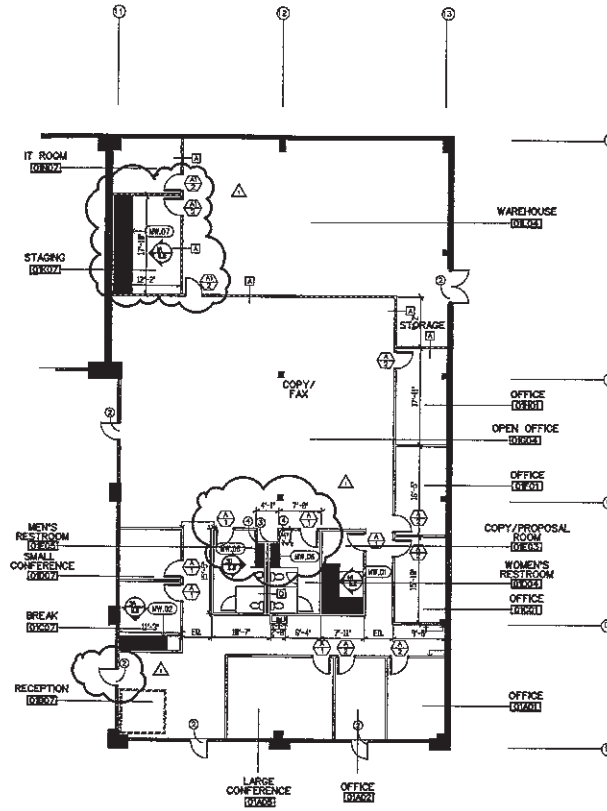
Project Name	GTE Communications Corporation
Project Number	01020203
Description	REMODELING PLAN



All drawings and written material appearing herein constitute original and copyrighted work of the architect and may not be duplicated, used, or disclosed without written consent of the architect.



A1.0

**KEYNOTES**

- ① NOT USED
- ② EXISTING DOOR TO REMAIN. COORDINATE LOCKING HARDWARE W/ REQUIREMENTS OF LEADERS MANUAL.
- ③ NEW BUILDING STANDARD ADA COMPLIANT WATER CLOSET.
- ④ BUILDING STANDARD RECESSED PAPER TOWEL DISPENSER/ WASTE RECEPTACLE. FINISH STAINLESS STEEL.

GTE
GTE Communications Corporation

Gensler

200 Madison Avenue, 17th Floor
New York, NY 10022
Tel. (212) 512-2000
Fax. (212) 512-3330

GENERAL NOTES

- A. ALL WALLS TO BE FIVE 1/2" G.I. PLATE FOR WALL PANELS.
- B. REFERENCE ALL 2 PER HOLLOWK AND DOOR SCHEDULES.
- C. ALL NEW DOORS TO BE TYPE A G.I. PLATE. REMOVE EXISTING PRIOR TO ERECTING NEW.
- D. ALL NEW DOORS TO RECEIVE HARDWARE SET AS SHOWN.
- E. ALL DOORS TO RECEIVE LOCKSET BEST 7 PIN LOCK SYSTEM AND 30" X 14" X 4" CYLINDERS EQUIPPED WITH CONSTRUCTION CORE. RETROFIT EXISTING EGRESS DOORS AS REQUIRED.

Rev. and Remarks	Date	By	Chk.
① 11.9.99 ASSESS FOR FINISHING			
② 12.9.99 ISSUED FOR CONSTRUCTION			

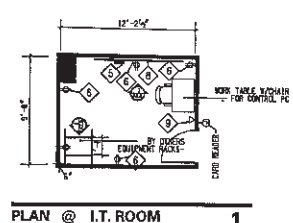
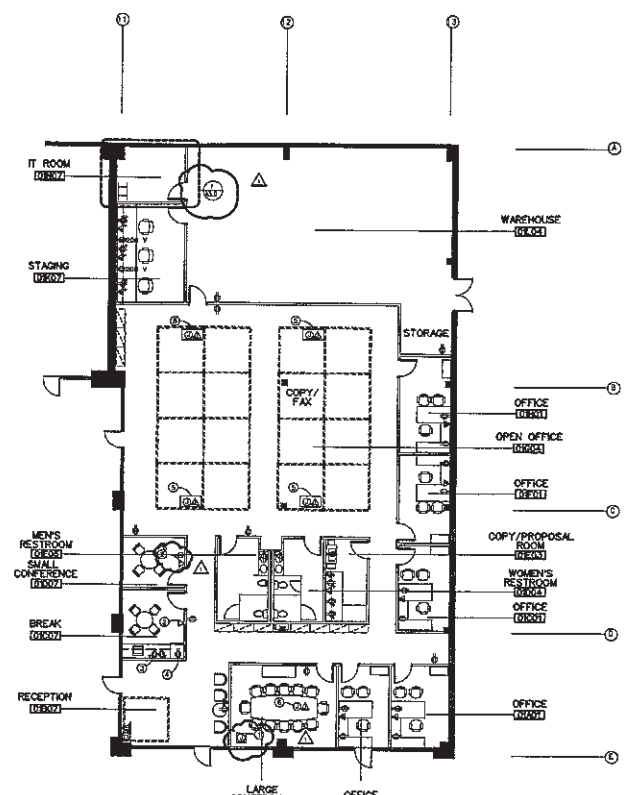
Project Name: GTE Communications Corporation
Project Number: 03-000124
Description: CONSTRUCTION PLAN
Computer File: cm-020-001

Scale: 1/8" = 1'-0"
1 2 3 4 5

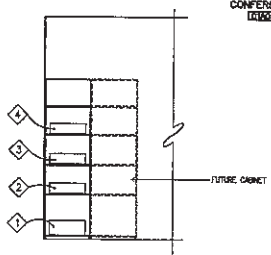
All drawings and written material appearing herein constitute original and copyrighted work of the architect and may not be duplicated, loaned or disclosed without written consent of the architect.
© 1999 Gensler All Rights Reserved.



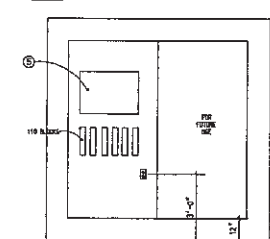
A2.0



PLAN @ I.T. ROOM
SCALE: 3/4" = 1'



TELECOM RACK
SCALE: 3/4" = 1'



TELECOM WALL
SCALE: 3/4" = 1'

- ◇ UPS - BEST POWER FORTRESS 1500 VA UPS BY TENNANT
- ◇ CISCO 2524 DATA SWITCH BY TENNANT
- ◇ CISCO 2624 ROUTER BY TENNANT
- ◇ DIGITAL LINK VLS ENGINE BY TENNANT
- ◇ SWITCH (VOICE/DATA) BY TENNANT
- ◇ 120V RECEPTACLE
- ◇ NOT USED
- ◇ 600 # 4" FINE RETARDANT FLY MOUNTED VERTICALLY
- ◇ COMMON USE PHONE
- ◇ OUTLET DESIGNATED FOR ABOVE CANNOT MOUNTED REVERSE. CONTRACTOR TO PROVIDE SURROUND WHERE NECESSARY.

KEYNOTES

- ① 2 ROW LIGHTED ARCADE CEILING FOR RECESSED VENTILATED REFRIGERATION UNIT PROTECTION SCHEM TO BE PROVIDED BY CONTRACTOR
- ② COMMON USE WALL PHONE MOUNTED 64" AFF
- ③ OUTLET DESIGNATED FOR ABOVE CANNOT MOUNTED REVERSE. CONTRACTOR TO PROVIDE SURROUND WHERE NECESSARY.
- ④ CONTRACTOR TO PROVIDE STANDBY MATE REFRIGERATION.
- ⑤ CONVENTION TELE/ DATA POWER JUNCTION BOX LOCATED ABOVE RECESSED CEILING. 4-ROD TO FEED POWER TO BE PROVIDED BY FURNITURE MANUFACTURER.
- ⑥ FURNITURE MOUNTED CONVENTION TELE/ DATA POWER JUNCTION BOX.

GENERAL NOTES

- A. GC TO COORDINATE WITH OWNER OF ALL VANCE REGARDING THE ISSUE FOR VESTIBULES.
- B. SUPPLEMENTAL HVAC I.T. ROOM TO HAVE A SEPARATE CONSTANT VOLUME CEILING. CEILING SHALL FEED THE ROOM THROUGH A 1" AS AIR SUPPLY. THE SUPPLY IS TO BE INSTALLED OUTSIDE THE SUSPENDED CEILING OF THE I.T. ROOM. INSTALL A THERMOSTAT WITHIN 6'-0" OF THE EQUIPMENT RACKS.
- C. FURNITURE ONLY SHOWS AND NO PANELS.
- D. WHEN TWO OR MORE OUTLET FUNCTIONS OCCUR SIDE BY SIDE THEY ARE SPACED 6" ON CENTER TYPICALLY 12" ON.
- E. GC TO COORDINATE THE SERIAL LATCH AND ELECTRICAL EQUIPMENTS OF NOTIFIED PROTECTION SCREENS.
- F. CABLES NUMBER WITHIN A CHASE TO BE MARKED INDIVIDUALLY BY MARKING YELLOW.
- G. CONTRACTOR TO CONNECT FURNITURE POWER POLES AND WIRING TO J-BLOCKS. COORDINATE WITH FURNITURE INSTALLER.
- H. CONTRACTOR TO CONNECT FURNITURE POWER POLES AND WIRING TO J-BLOCKS. COORDINATE WITH FURNITURE INSTALLER.



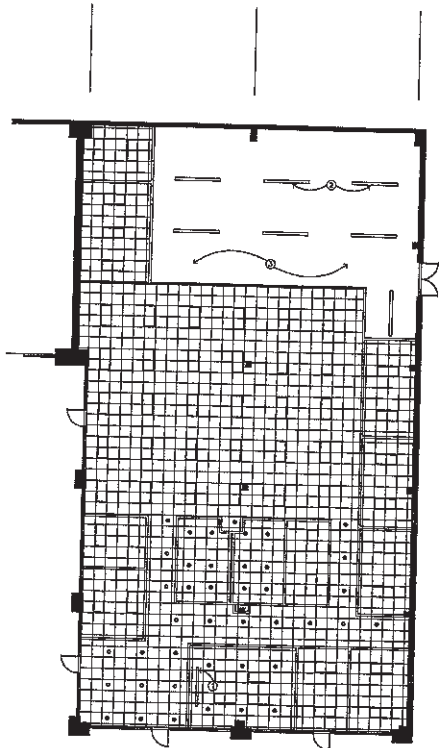
Gensler

30 Main Street, 7th
New York, NY
212 692 5500
Fax: 212 692 5505

Issue No.	Date	By	Check
1	10/20/91	ISSUE FOR PROPOSAL	BUT NOT
2	10/20/91	ISSUE FOR CONSTRUCTION	NOT

Project Name	GTE Communications Corporation
Client	GTE Communications Corporation
Project Number	11/001/024
Description	POWER AND COMMUNICATION PLAN
Contractor File No.	11/001/024
Scale	1" = 1'

All drawings and written material appearing herein constitute original and unpublished work of the architect and may not be duplicated, used or disclosed without written consent of the architect.
© 1991, Gensler All Rights Reserved



KEYNOTES

- ① CONTRACTOR TO PROVIDE AND INSTALL RECESSED MITERED PROJECTION SCREEN, 16 5/8" WIDE PROJECTION SCREEN TO BE:
 - 16 5/8" LITE
 - RESISTIVE ELECTRICAL
 - 48" HGT
 - WHITE WHITE VIEWING SURFACE
- ② WAREHOUSE LIGHTING LITHONIA-COAGULA 20W VATT 8'-0" STEP LIGHT IN THIS AREA
- ③ NO FINISHED CEILING IN THIS AREA

GENERAL NOTES

- A. NEW HULLING STAMMING CEILING T.E.L.
- B. PROVIDE AN ALLOWANCE FOR LIFE SAFETY DEVICES, BULB EXIT SIGNS, HOVING, STRIKES, ETC.
- C. ALIGN INTERFERS AND SETBACK WALLS IN RELATION TO LAYOUT WHERE POSSIBLE.
- D. CEILING GRID PROVIDED FOR REFERENCE ONLY. CONTRACTOR TO VERIFY EXISTING CONDITIONS.



GTE Communications Corporation

Gensler

18 Hudson Avenue, NYC
 New York, NY 10013
 Phone: (212) 512-2000
 Fax: (212) 512-2000

Issue and Revision	Date	By	Checked
1. 11.15.93 ISSUE FOR PERIOD		ELZ	JL
2. 12.16.93 ISSUE FOR CONSTRUCTION		AMH	JL

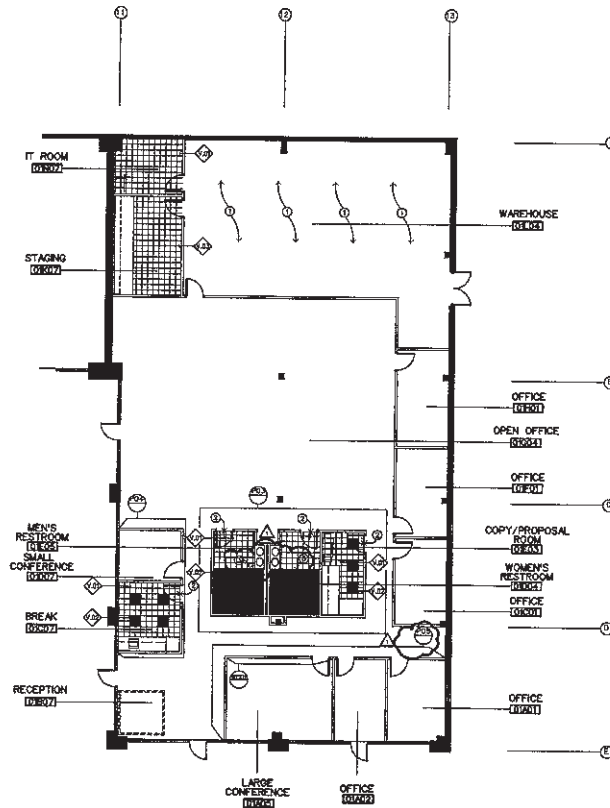
Project Name	GTE Communications Corporation
Project Number	15-00000X
Description	REFLECTED CEILING PLAN

Scale	1" = 4' 0"
-------	------------

All drawings and written material appearing herein constitute original and confidential work of the architect and may not be reproduced, used or disclosed without written consent of the architect.
 © 1993 Gensler All Rights Reserved



A4.0



- KEYNOTES**
- 1. EXISTING CONCRETE SLAB FLOOR TO REMAIN. APPLY CLEAR CONCRETE SEALER.
 - 2. PROVIDE CARPET TO MEET TRANSITION STRIP.
 - 3. BRICK PLACE RESTROOM PARTITION.
 - 4. ALUM VCT WITH RESTROOM PARTITION.

GTE
 GTE Communications Corporation

Gensler

All Notes Pertain
 to this Drawing
 Gensler
 Inc.

- GENERAL NOTES**
- A. ALL BASE TO BE CAR. BULK.
 - B. ALL CARPET TO BE CAR. BULK.
 - C. ALL WALLS TO BE PAINTED F&S BULK.
 - D. ALL DOOR FRAMES TO BE PAINTED F&S BULK.
 - E. IN ALL AREAS WHERE RESIDUAL FLOORING OCCURS DETAIL E&C.
 - F. REFER TO N.E.2 FOR SPECIFIC FINISH INFORMATION.

Revisions and Approvals

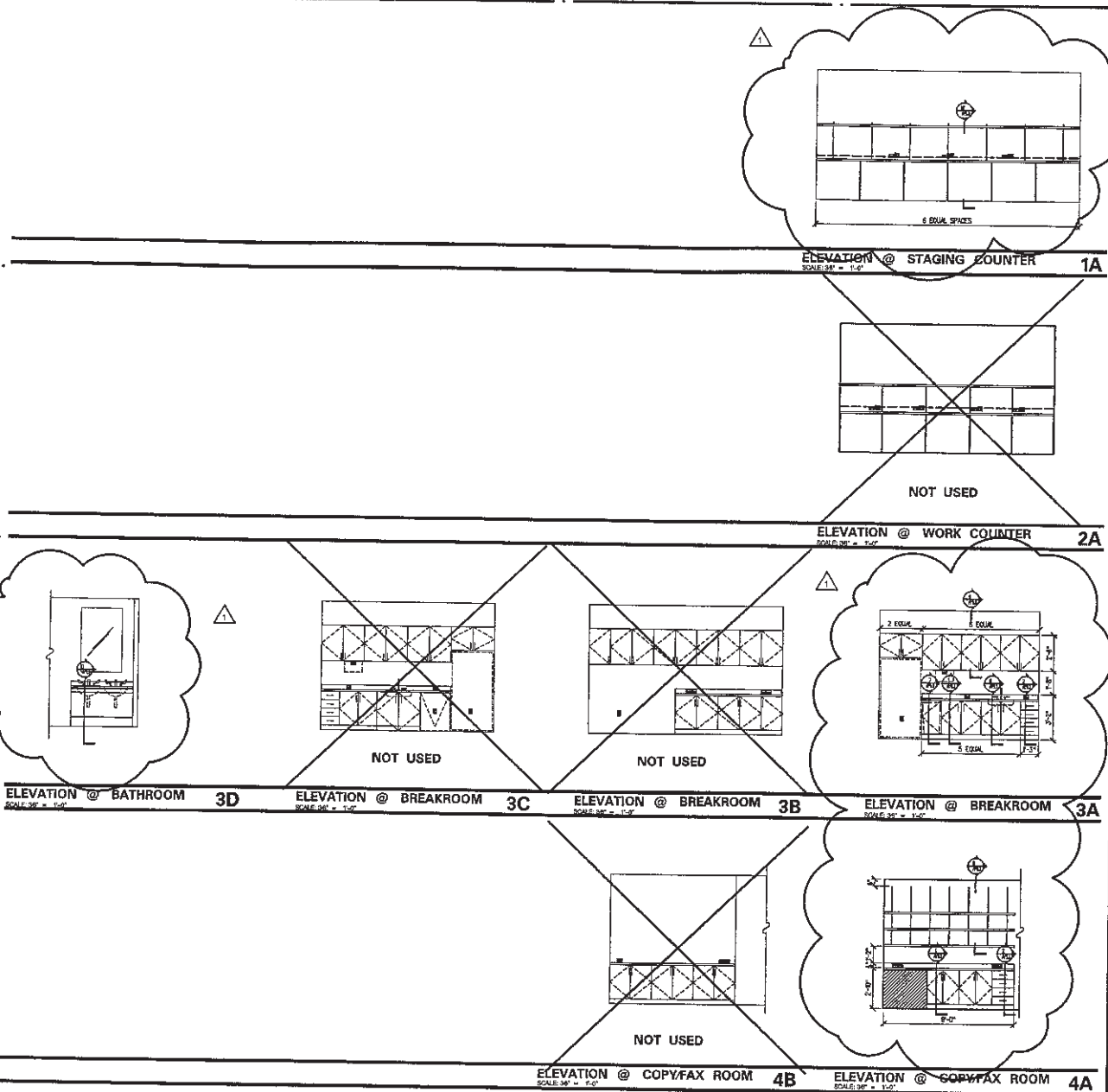
No.	Date	By	Check
1	11.25.99	RSB	AS
2	12.25.99	RSB	AS

Preparation and Approval

Project Name: GTE Communications Corporation
 Birmingham, Alabama
 Project Number: 33.0001024
 Description: FINISH PLAN
 Computer File: 11.050101
 Scale: 1/8" = 1'-0"

All drawings and written material appearing herein constitute original and unclassified work of the architect and may not be disclosed, copied, or otherwise used without written consent of the architect.
 © 1999, Gensler. All Rights Reserved.

A5.0



KEYNOTES

GENERAL NOTES

GTE
GTE Communications Corporation

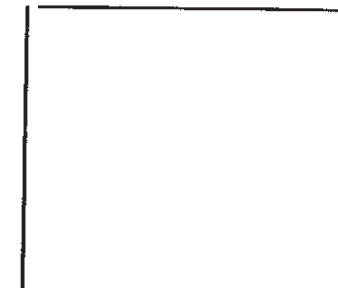
Gensler

180 Madison Avenue, New York, NY 10017
Tel: 212 687 2000
Fax: 212 687 2001
www.gensler.com

Rev	Date	Revision	By	Check
1	11.15.99	ISSUE FOR PROLOG	SUZ	JH
2	12.10.99	REVISED FOR CONSTRUCTION	ALAN	JH

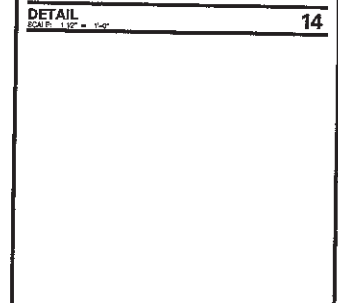
Project Name	GTE Communications Corporation
Project Number	EL 001 012
Description	INTERIOR ELEVATIONS
Consultant File	EL 001 012
Scale	SEE ELEVATION

All drawings and written material appearing herein constitute original and confidential work of the architect and may not be duplicated, used or disclosed without written consent of the architect.
© 1999 Gensler All Rights Reserved



DETAIL
SCALE: 1/2" = 1'-0"

13



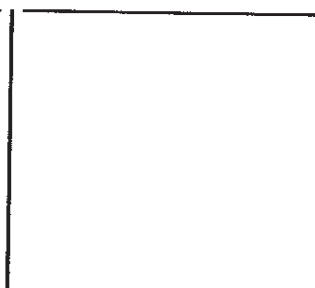
DETAIL
SCALE: 1/2" = 1'-0"

14



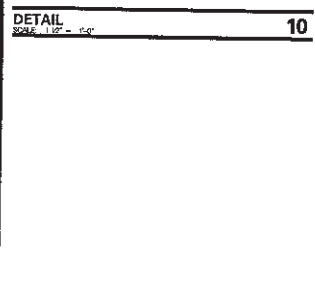
DETAIL
SCALE: 1/2" = 1'-0"

16



DETAIL
SCALE: 1/2" = 1'-0"

9



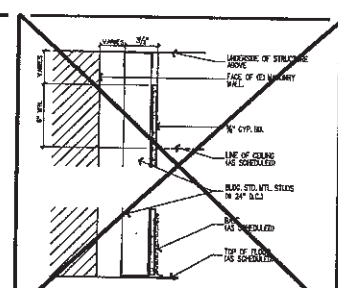
DETAIL
SCALE: 1/2" = 1'-0"

10



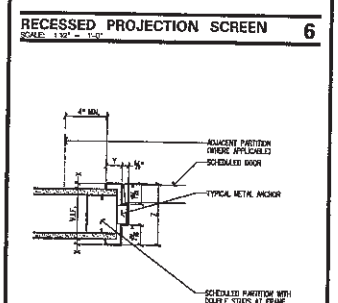
DETAIL
SCALE: 1/2" = 1'-0"

12



FURRED WALL "E"
SCALE: 1/2" = 1'-0"

5



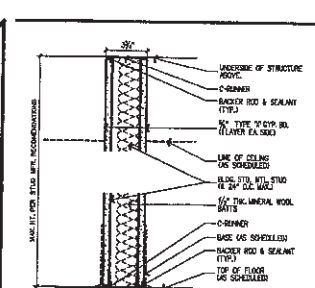
RECESSED PROJECTION SCREEN
SCALE: 1/2" = 1'-0"

6



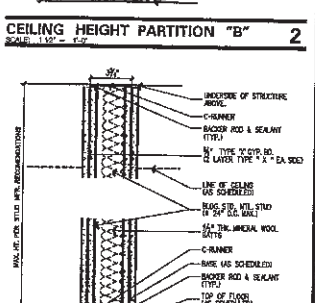
HOLLOW METAL HEAD DETAIL
SCALE: 1/2" = 1'-0"

8



1 HOUR PARTITION "A"
SCALE: 1/2" = 1'-0"

1



CEILING HEIGHT PARTITION "B"
SCALE: 1/2" = 1'-0"

2



CHASE WALL "D"
SCALE: 1/2" = 1'-0"

4

KEYNOTES

1. IN 8/90 ISSUE FOR PROGRESS

2. REVISION ISSUED FOR CONSTRUCTION

Project Name: GTE Communications Corporation

Project Number: Birmingham, Alabama

Description: US-800

Computer File: 01-080-001

Scale:

All drawings and written material appearing herein constitute original and unpublished work of the architect and may not be duplicated, used or disclosed without written consent of the architect.

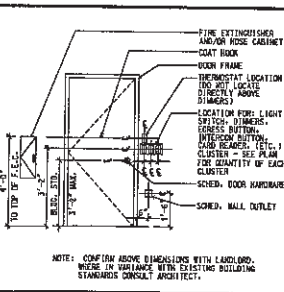
© 1990 Gensler All Rights Reserved

GTE
GTE Communications Corporation

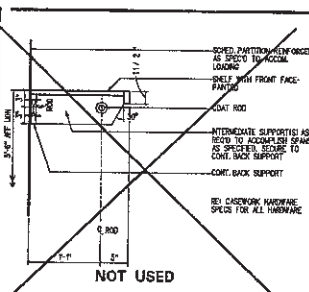
Gensler

1600 North 17th Street, NW
Atlanta, Georgia 30339
Tel: 404-525-8800
Fax: 404-525-8808

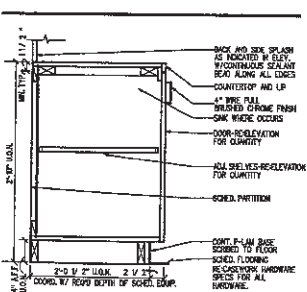
A9.0



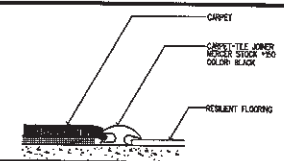
13
TYPICAL MOUNTING HEIGHTS



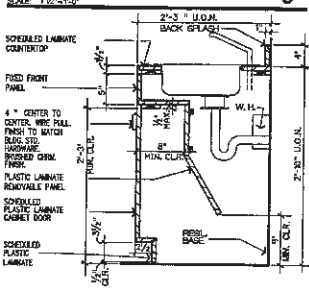
5
COAT ROD & SHELF SECTION



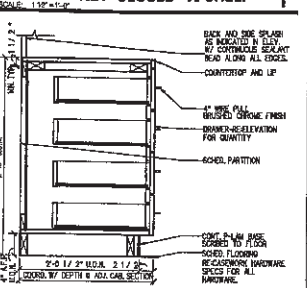
1
BASE CABINET CLOSED W/SHELF



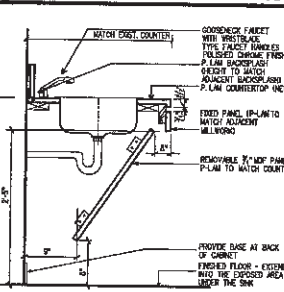
10
CARPET TO VCT TRANSITION



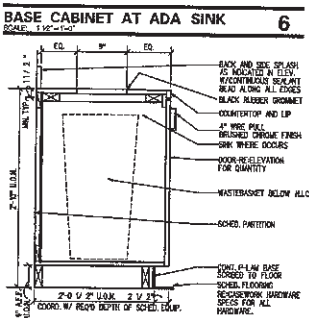
6
BASE CABINET AT ADA SINK



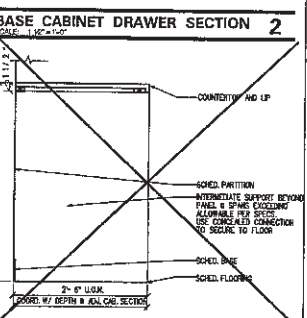
2
BASE CABINET DRAWER SECTION



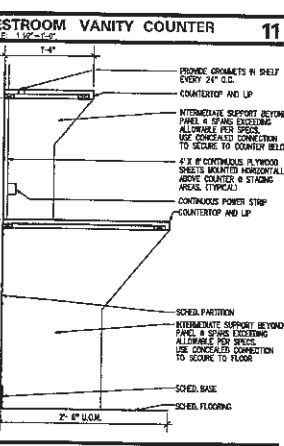
14
RESTROOM VANITY COUNTER



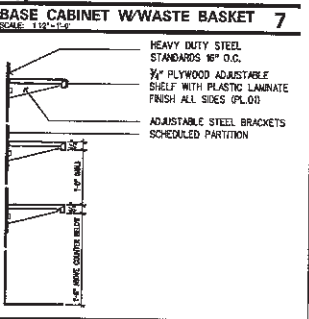
7
BASE CABINET W/WASTE BASKET



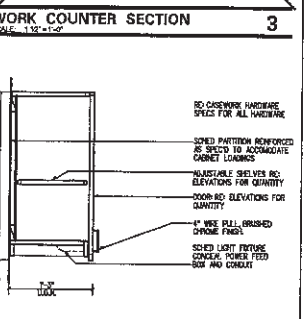
3
WORK COUNTER SECTION



15
SECTION @ STAGING COUNTER



8
SECTION @ ADJ. SHELVING



4
UPPER CABINET CLOSED W/SHELF

GENERAL NOTES

Rev.	Date	By	Check
1	12/20/09	SS	ST
2	12/20/09	SS	ST

All Material Drawn, 1/07
 Date: 06/27/07
 Author: 06/27/07
 Title: 06/27/07
 Project: 06/27/07

Project Name: GTE Communications Corporation
 Client: Elmhurst, Illinois
 Project Number: 05000250
 Description: DETAILS
 Computer File: 01.dwg
 Scale: SEE DETAIL

All drawings and written material appearing herein constitute original and unpublished work of the architect and may not be duplicated, used or disclosed without written consent of the architect.
 © 1996 Gensler All Rights Reserved